



# GPC

## Weigh off Handbook

This is a guide to help with your weigh off; we have tried to cover all the "frequently asked questions" and to supply some instruction to help you.

- 1) Some sites have a pre registration for their weigh offs; this is an option any site can use in determining the amount of entrants there will be. Any site may take our example entry form and modify however they wish. It is based on the data entry program, which will make it easier for those working the computer:

### GENERAL WEIGH-OFF ENTRY FORM

Grower Information	
** First Name:	<input type="text"/>
** Last Name:	<input type="text"/>
Address:	<input type="text"/>
	<input type="text"/>
** City:	<input type="text"/>
Country:	<input type="text"/>
State/Province:	<input type="text"/>
** Postal Code:	<input type="text"/>
<b>** Required</b>	
Entry Information	
** Class:	<input type="text"/>
(choose one)	<input type="text"/>
Weight:	<input type="text"/>
Exhibition Only?	<input type="checkbox"/>
DMG?	<input type="checkbox"/>
Seed (Mother):	<input type="text"/>
Pollinator (Father):	<input type="text"/>
Date Seed Started:	<input type="text"/>
Date Set Outside:	<input type="text"/>
Date Pollinated:	<input type="text"/>
Date Removed:	<input type="text"/>
Number Lobes:	<input type="text"/>
Plant Size:	<input type="text"/>
Vine Type:	<input type="text"/>
(choose one)	<input type="text"/>
Feet on Vine:	<input type="text"/>
Notes:	<input type="text"/>
Side-to-Side	End-to-End
Circumference	Total OTT
Est. Weight	% Chart
Measurements (inches):	<input type="text"/>
	<input type="text"/>
	<input type="text"/>
	<input type="text"/>
	<input type="text"/>
	<input type="text"/>
<b>*Measurements will be made by weighoff crew *</b>	

I ensure the quality of my entered fruit by attesting to the spirit of fairness of competition and fellowship while adhering to all GPC rules and regulations. I have cultivated, nurtured and tended for this pumpkin from planting to harvest.

Signature

This document can be found at:

<http://greatpumpkincommonwealth.com/PDF/ENTRYFORM.doc>

Here is a link that has Dave Stelts and Ken Desrosiers talking about the BP spread sheet:

<http://www.youtube.com/user/tremor6614#p/u/4/an7ZTDe2SC0>

It is a huge benefit to have all the correct information about the grower/growers and their fruit. The cross should be noted, female and male. Were the pollinations controlled?

Here's some samples of how other sites handle the registration process:

<http://www.youtube.com/user/tremor6614#p/u/5/WmrO6ZC1tKE>

<http://www.youtube.com/user/tremor6614#p/u/15/GP0ZIxyInUQ>

[http://www.youtube.com/user/tremor6614#p/u/8/9ww\\_0qqtNnk](http://www.youtube.com/user/tremor6614#p/u/8/9ww_0qqtNnk)

The measurements also should be recorded; the 3 measure system is what is used in determining the estimated weight. Here is a breakdown and an illustration

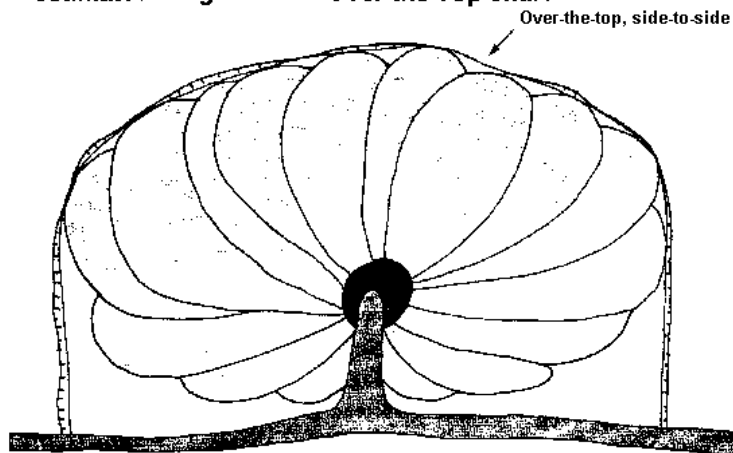
To calculate your pumpkin weight, you need to obtain three measurements.

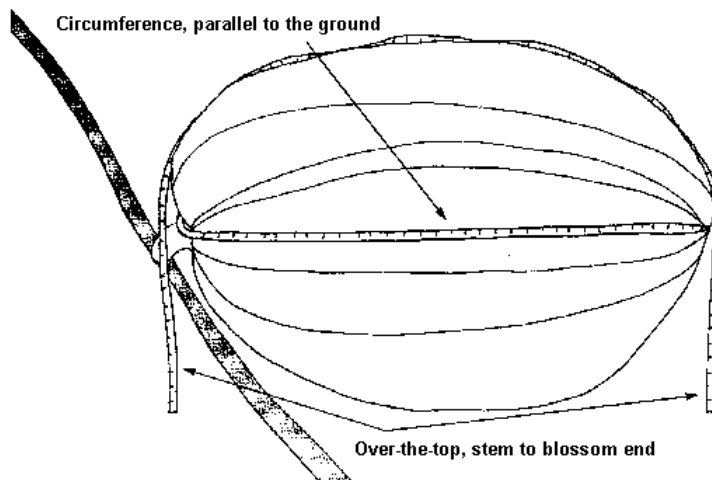
Measure the circumference of the fruit parallel to the ground at stem height. This is measurement number 1.

Now place your tape at the plant stem to the ground and to the blossom end to the ground. What is the distance from ground to ground? This is measurement number 2.

Now place your tape perpendicular to the plant stem at the widest portion of the pumpkin. Place the tape at the ground on both sides at this wide spot. Is it perpendicular to the plant stem? Now measure the distance from ground contact to ground contact. This is measurement number 3.

**Add the three measurements and find your total and estimated weight on the Over-the Top chart.**





**Take the circumference measurement only and find your weight on the Circumference Chart.**

The circumference measurement should be taken where you have the largest circumference. It will not always be parallel to the ground. It may be above or below the stem and above or below the blossom point. On most large pumpkins the largest circumference is not at the stem/ blossom level. The largest circumference is necessary to obtain the most accurate weight estimate as most of the circumference measurements used to obtain the weight equations were largest circumference

Here's some video on how to measure OTT

<http://www.youtube.com/user/tremor6614#p/u/17/Cd1S8gUC-Ew>

<http://www.youtube.com/user/tremor6614#p/u/11/zAY498hHkc4>

## 2) Judges

### Article 1 Section 5 Paragraph B & C

*B. Each site will be responsible for providing no less than 3 and no more than 5 judges.*

*C. Judges for a weigh-off will consist of any combination of the following: club/grower representative, site coordinator, site representative, and two experienced growers.*

Each site **must** have a minimum of 3 judges to inspect and check over each fruit.

These judges should have a good knowledge of agriculture/gardening and be thoroughly informed of all GPC rules and standard practices. Some sites use growers, some use agriculture related representatives. Fair and unbiased is the key to selecting your judges.

### 3) Securing a Scale for Weigh off Day and Weighing the Fruit

**This is the single most important item you need at your Weigh off.**

Article I Section 11 Paragraph B:

*The above mentioned representatives will also assume responsibility of ensuring the integrity of the fruits and that scales have been calibrated by a recognized weights and measurement business or government agency prior to the weigh-off.*

Article II – Section 2

*All specimens that will be submitted to the GPC for prize money and recognition must be weighed on a certified scale with only the fruit on the scale. Any fruit weighed with a tarp, pallet, or any other lifting device will be classified unofficial weight or "EXH"*

Generally the fruits are weighed from smallest to biggest

Each fruit is brought to the scale either by forklift and lifting ring, or as they do in a few places, human manpower.

To achieve the drop dead accurate weight, all lifting and moving items should be removed once the fruit is on the scale. This includes the lifting ring and ties or the lifting tarp.

Only the naked fruit on a platform scale will be considered for the official weight.

Anything else will be considered exhibition only.

Article II Section 2 paragraphs A & B:

- A. A certified scale is one that has been inspected and certified by a governmental agency and must have a current certification sticker attached to the scale. Scales that have been certified by other qualified agencies for commercial purposes as "legal for trade" are also acceptable.*
- B. All sites should use a 4' X 4' platform scale or larger, sitting level on a solid stable surface.*

The GPC would prefer a scale to be calibrated to .5 of a pound, weights given in 1 pound increments are acceptable but not preferred.

Most sites rent these from a local scale company, and have the company come and set up the scale. Also it's a good idea to have a representative from the company present during the weigh off, as a precaution, just in case there are scale related issues. If a scale representative cannot be present make sure you get a number for emergency service.

Make sure to have your scale placed on a very sturdy, stable structure if you are locating it above ground, as they need to be on a very solid base. Same attention should be used if placing the scale on the ground to be sure there is a very stable foundation.

Here's a video about scale certification:

<http://www.youtube.com/user/tremor6614#p/u/10/BETp0fWPch8>

Also it is almost a necessity to have at least 1 digital display for the crowd to see the weight as the fruit is placed on the scale:



#### 4) Unloading of Exhibits

Securing at least one fork lift and a lifting is almost a given, as you will be bombarded by multiple entrants arriving at the same time.

It is a good practice to off load the fruit once the grower has registered

To help the equipment operators moving the fruit on site please view these YouTube videos:

[http://www.youtube.com/watch?v=7c-r9G0cLjg&feature=channel\\_video\\_title](http://www.youtube.com/watch?v=7c-r9G0cLjg&feature=channel_video_title)

Here's some videos to help you get your site organized:

<http://www.youtube.com/user/tremor6614#p/u/13/qNRUO6Z2Zwl>

<http://www.youtube.com/user/tremor6614#p/u/7/KOeYx0k7tw0>

<http://www.youtube.com/user/tremor6614#p/u/6/B8Y3hxxZX2k>

#### 5) Inspecting of the fruit. (Pumpkins and Squash)

Article II – Section 3 and 4:

*3) No foreign material (fungicides, caulking material, dirt, etc.) is permitted to be included in the weighing. Vines must be trimmed to within one inch of the stem of the fruit. The judges reserve the right to fully inspect each specimen before the weight is announced and is official. Refusal to allow the inspection of an entry will cause said entry to be deemed "exhibition only"*

*4) The specimen must be sound, healthy and undamaged. Entries must be free of rot, holes or cracks through to the cavity, and serious soft spots.*

The judge may probe any crack, hole or opening into a pumpkin, which visually appears that it may extend into the interior cavity (**in the presence of the grower only**). A 36-inch by 16th of an inch metal probe (can be any type of hard wire etc, just as long as it is rigid and won't bend easily) will be provided to the judge to probe suspect openings. An opening where the probe meets no resistance into the interior cavity will disqualify that entry from competition. All decisions by the judges are final.

Here's a video: <http://www.youtube.com/user/tremor6614#p/u/9/tTbLjdYO2lw>

## 6) Color of fruit

### Article III Section 1

*Squash will be classified as follows – 100% of the following colors or color combinations green, blue, and gray. The surface area of the fruit as grown in the garden, not including the portion that was in contact with, or close proximity to the ground will be considered. This area will include the area between the ribs, around the stem, and the blossom end. This will not include any netting (cantaloping), any discoloration caused by the close proximity to the ground, or minimal amounts of white striping or mottling associated with some squash.*

*A) Pumpkins will be all fruit not classified as squash*

There has been much discussion over the years on the proper classification of squash. It must be understood that competitive giant squash in general terms are the same variety as giant pumpkin, the Atlantic Giant Variety. The variety is sometimes referred to as "Show King Squash" named by the late Howard Dill. The rules were changed in 2004 from a percentage green basis to the 100% classification in current GPC rule. This definition is recognised by The Guinness Book of World Records. The purpose of such a tightly defined rule is to promote the purity of True Green Squash and to create a fair and level playing field in the sport.

The following is a discussion, explanation and clarification of the above rule.

- 1) **100% green, blue or grey.** This does not include white, yellow, cream or orange. The presence of any of these colors immediately classifies the specimen as a pumpkin.
- 2) **Not including the portion that was in contact with, or in close proximity to the ground will be considered.** This allows for the area on the bottom of the fruit to have some white. This is the area immediately in contact with the ground which may have been buried in sand. This area is often white or has an absence of green.
- 3) **This area will include the area between the ribs, around the stem, and the blossom end.** This allows for some white in the base of the ribs, immediately around the stem and the blossom end.

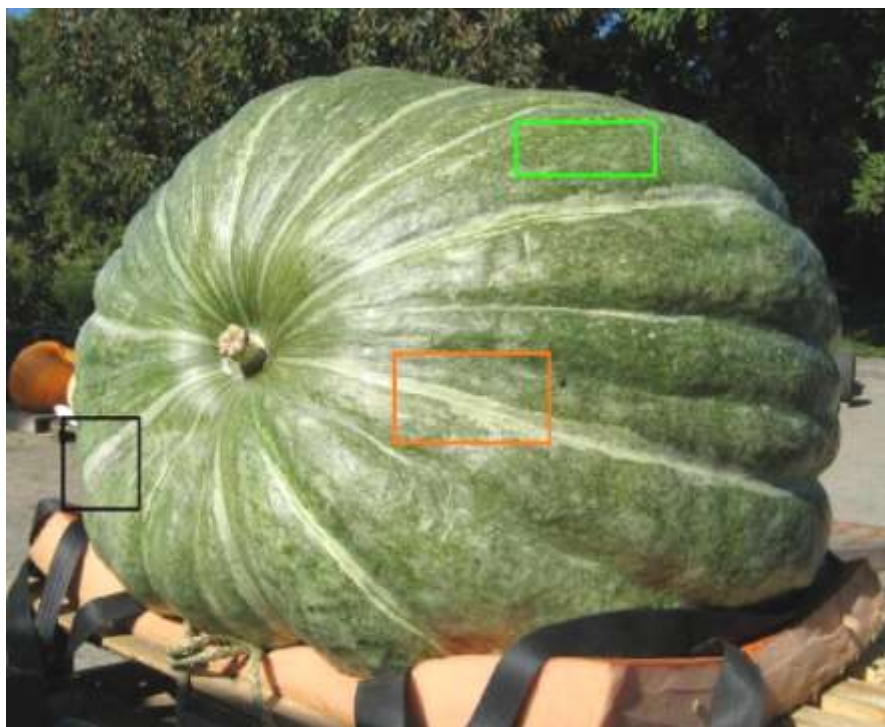


**4) This will not include any netting (cantalouping).** Calloused netting (cantalouping) that appears lighter in color (i.e. white, beige or cream), on the surface of the specimen will be allowed. It is very important for the judge to differentiate between this allowable cantalouping and off colors that are not allowed.

**5) Minimal amounts of white striping or mottling associated with some squash.**

These characteristics are allowed. The white striping referred to here is in the base of the ribs, not on top of the ribs. Mottling may appear as white starbursts, which are also allowed.

### **Pictures and Examples**



Above is an excellent example of a True Green squash as defined by the color rule. This fruit clearly shows striping and some mottling as described in the rule.



This example of a True Green Squash shows light colored Cantalouping, some mottling and some white striping that is acceptable.



This example shows acceptable mottling on the surface of the squash.





This specimen was classified as squash under the old rules but would now be classified as a pumpkin, due to the presence of orange.



This fruit although has cantalouping, clearly has pink/ orange showing through and would be classified as a pumpkin.



This specimen clearly has white showing through and on the top of the ribs, not in the base and would be classified as a pumpkin.



This specimen also has way too much white/ cream and would be classified as a Pumpkin.

### **Thumb Rule:**

If the color of the specimen is at all questionable, it should be classified as a pumpkin.

## **The Howard Dill Award**

This award may not be at every weigh off, but if you have this award, it is given to the prettiest pumpkin at the weigh off, determined by your judges or other unbiased method – some sites use crowd voting or an independent panel.

Some sites have a size minimum for this; say 500 lbs, as an example. This will be a site preference; you may decide to have no minimum.

## **So what's left now?**

It's time to present the awards to the growers, the plaques, ribbons and monetary winnings (if you have). Your weigh off is now complete and the most important thing left to do, is get all your information sent in to the GPC and Ken @ Big Pumpkins. If there is an internet connection available at the site, please try to enter weights and synch with the web as they are being weighed. People around the world will be watching!

Also, if the growers themselves aren't aware of it, all the vital statistics of the fruit can also be sent to the AGGC. At [www.aggc.org](http://www.aggc.org)

## **Other fruits and Vegetables at Your Weigh Off**

Please refer to our official document for a complete listing of all rules regarding other vegetables.

<http://greatpumpkincommonwealth.com/rules.php>

## Long Gourds

There are very few rules for long gourds, your one and only criteria for this exhibit is the length. No part of the stem will be considered in the total length of the specimen

**Stems not included**



Measurement of length should be carried out by placing the specimen on a flat surface, measured in a straight line from stem to blossom end. Do not follow the curve.

Do not worry if the gourd moulds. This is a natural drying process. Any sign of fungus should be wiped off with a cloth. All gourds mould in natural drying. Long gourds may crack with growth spurts. With time cracks heal. Gourds are grown for length, Do not disqualify a World Record length because of cracking or mould.

Gourds that mature in June or July will not last until Sept. Of Oct. Before moulding or discolouring. A moulded gourd is fully mature and will have seeds inside. Immature gourds are soft and light green colour. Immature fruit picked too early will pucker. Immature or mature fruits are acceptable if gourds are grown for length. They are not acceptable if grown for other ornamental competition. Ornamental gourds have different judging standards.



## Field pumpkins

These fruit are to be inspected and judged much the same as the giant pumpkins and squash (i.e. trimmed vines, no holes into cavity). They are NOT subject to the color rule – field pumpkins which are still partially or totally green can still be entered into the field pumpkin category legally. Field pumpkins are *cucurbita pepo*, as opposed to “giant” pumpkins, which are *c. maxima*. The defining characteristic of *c. pepo* is a hard, dark green stem.

Varieties such as Prizewinner and Big Max are *c. maxima* and do not have hard green stems. These varieties are not allowed to be entered as field pumpkins



Field Pumpkin



## Watermelon

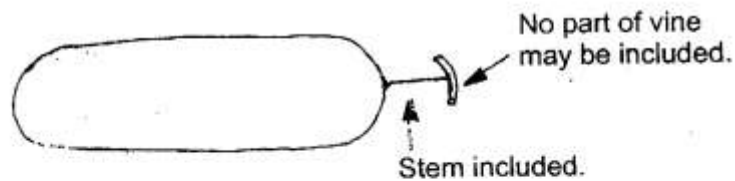
Very popular in some weigh offs and gaining popularity.

Watermelons as with the Giant Pumpkins are judged by weigh.

Their outer surface must be clean of all dirt and debris, and there should be no cracking of the surface or penetrations to the interior of the fruit.

Be sure to clip the stem end to within an inch of the fruit.

Here is an illustration:



## Tomato

This fruit is judged by weight alone, appearance needs to be clear and clear of defects and no cracks or lacerations to the outer skin.

Tomatoes in varying states of maturity are acceptable from immature greens to ripen reds.